

# DSC HU/CM REMOVAL/INSTALLATION

---

B3E041543750W01

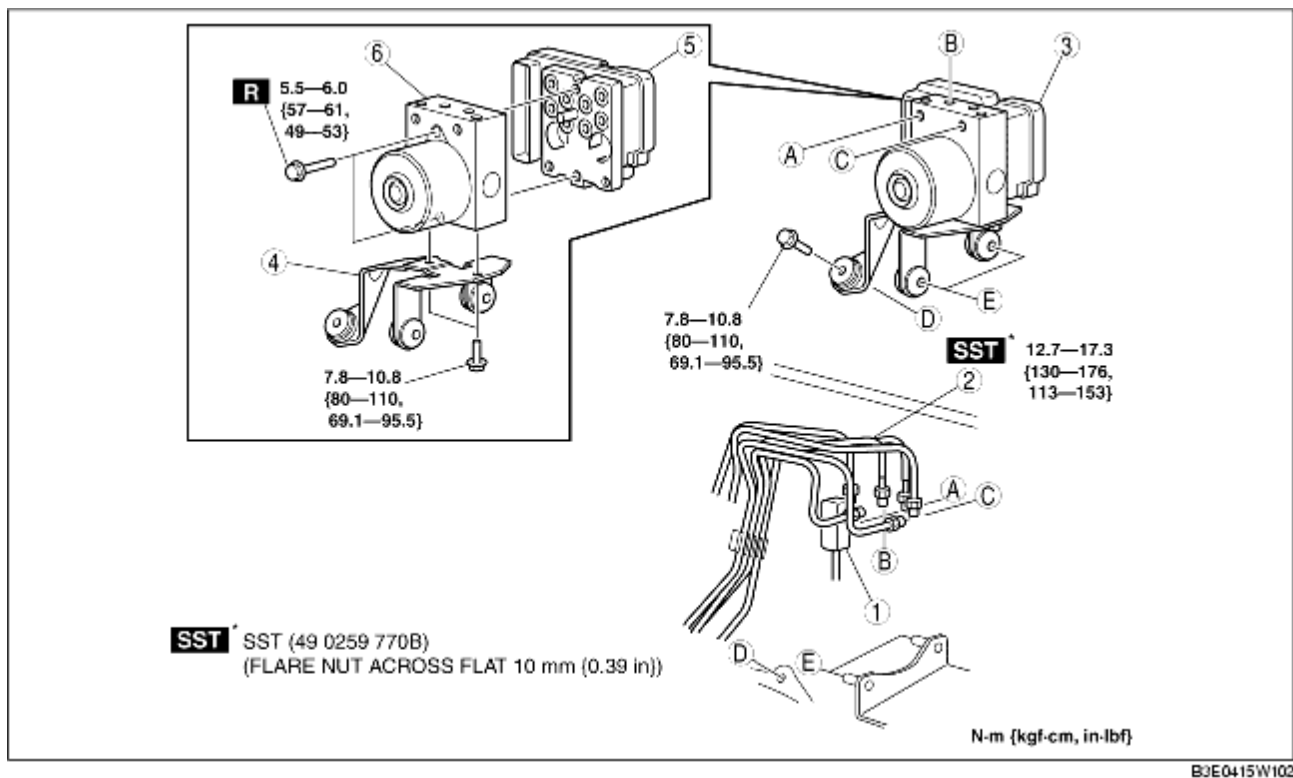
## Caution

- The DSC may not function normally immediately after the DSC HU/CM is replaced. After installation, always perform the initialization procedures for the combined sensor, brake fluid pressure sensor.
- Always use the adapter that comes with a new DSC HU or DSC CM when separating the DSC HU or DSC CM. Otherwise, the pump motor may come off the DSC HU and be damaged. Therefore, do not separate the DSC HU and DSC CM unless replacing them. When replacing them with new ones, always perform procedures according to the instructions included with the new parts.
- The internal parts of the DSC HU/CM could be damaged if dropped. Be careful not to drop the DSC HU/CM. Replace the DSC HU/CM if it is subjected to an impact.

1. Remove the battery and battery tray. (See [BATTERY REMOVAL/INSTALLATION \[ZJ, Z6\]](#).) (See [BATTERY REMOVAL/INSTALLATION \[LF\]](#).)
2. For L.H.D., remove the reserve hose (MTX vehicles). (See [Reserve Hose Removal Note](#).) (See [Clutch Pipe and Clutch Reserve Hose Removal Note](#).) (See [Reserve Hose Installation Note](#).) (See [Clutch Pipe and Clutch Reserve Hose Installation Note](#).)
3. Remove in the order indicated in the table.
4. Install in the reverse order of removal.
5. Perform the initialization procedures for the combined sensor, brake fluid pressure sensor. (See [COMBINED SENSOR INITIALIZATION PROCEDURE](#).) (See [BRAKE FLUID PRESSURE SENSOR INITIALIZATION PROCEDURE](#).)
6. Clear the DTCs from the memory. (See [Clearing DTCs Procedures](#).)

## Note

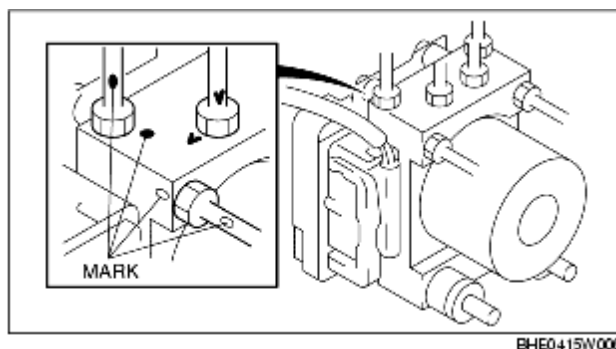
- Even if the initialization procedure is performed after replacing the DSC HU/CM, DTCs B2141 and C2785 are stored in the memory as past malfunctions.



1	Connector (See <a href="#">Connector Removal Note.</a> ) (See <a href="#">Connector Installation Note.</a> )
2	Brake pipe (See <a href="#">Brake Pipe Removal Note.</a> ) (See <a href="#">Brake Pipe Installation Note.</a> )
3	DSC HU/CM, bracket (See <a href="#">DSC HU/CM, Bracket Removal Note.</a> )
4	Bracket
5	DSC CM
6	DSC HU

## Brake Pipe Removal Note

1. Place an alignment mark on the brake pipe and DSC HU/CM.

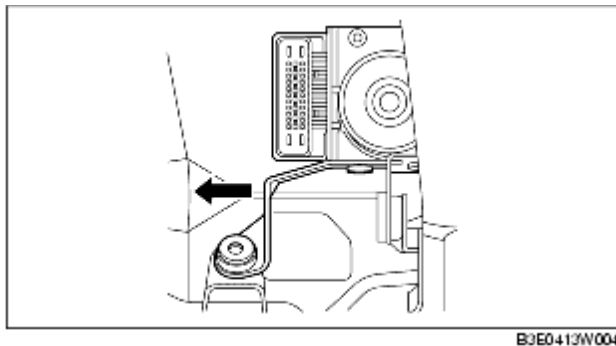


2. Apply protective tape to the connector to prevent brake fluid from entering.

3. Remove the brake pipe.

## DSC HU/CM, Bracket Removal Note

1. As shown in the figure, move the bracket in the direction of the arrow and remove the DSC HU/CM and bracket from the body.



## Brake Pipe Installation Note

1. Align the marks made before removal and install the brake pipe into the DSC HU/CM referring to the figure.

